

# Genture Electronics

**Dedicate itself to LED innovation& application**



**Product Manual**

**---DLP (Digital Light Processing)**

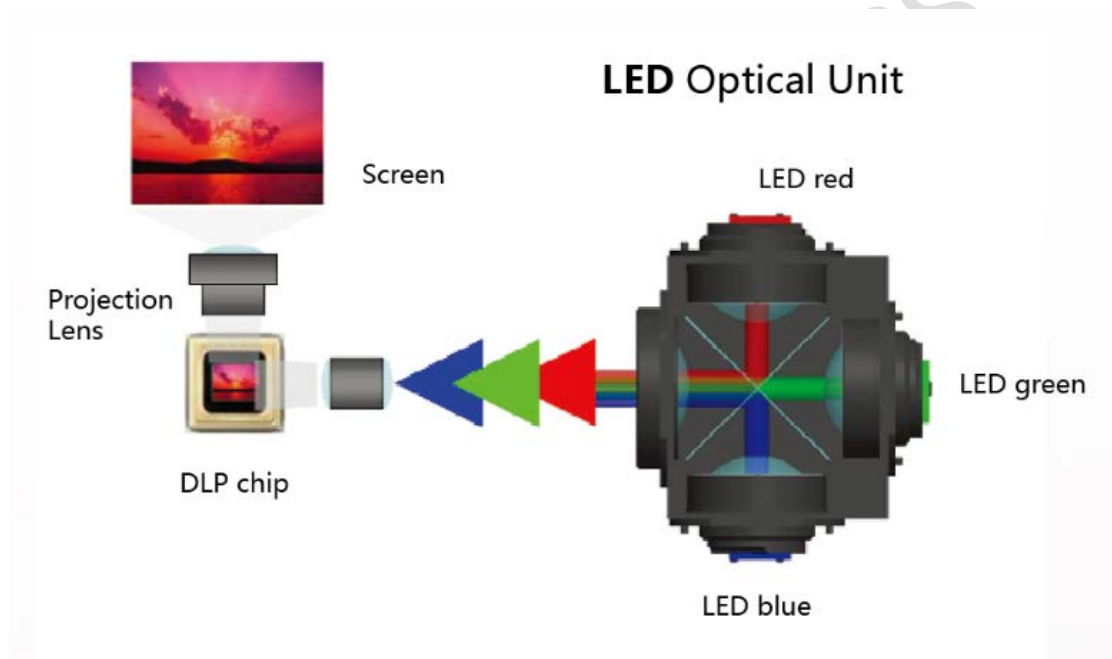


## Part 1 Digital Light Processing

### 1.1.1 Product Overview

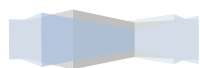
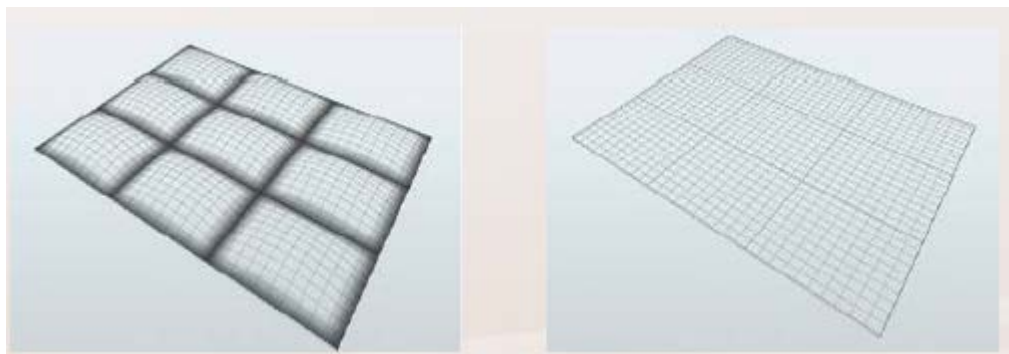
- Intelligent LED

Brightness model control: brightness/normal/energy-saving, can be adjusted to the environmental conditions.



- DGC (Digital gradient circuit)

By using DGC, the brightness of screen edges can be improved obviously, uniform brightness distribution.



Without DGC

using DGC

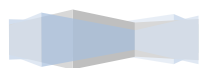
**■ CSC (color space control)**

By using digital color space control circuit, or digital color balance, compensate the difference of color& brightness between units.

**■ Automatic Balancing**

Before

After



## 1.1.2 Specifications

### ○ Specifications

Display size		50 "		70 "	
Resolution		XGA+ ( 1024 x 768Pixels )		FULL HD ( 1920 x 1080Pixels )	
Maintenance mode		Rear	Front	Rear	Front
Technology		DLP		DLP	
Brightness	Bright mode	510		810	
	Normal mode	420		600	
	Eco mode	330		410	
	Advanced Eco mode	-		120	
Viewing angle	Horizontal	1/2 gain : $\pm 35^{\circ}$ , 1/10 gain : $\pm 57^{\circ}$			
	Vertical	1/2 gain : $\pm 10^{\circ}$ , 1/10 gain : $\pm 28^{\circ}$			
Contrast		1700 : 1		1500 : 1	
Gamut		-		180%	
Gap (mm)	Horizontal	0.2~1.0 ( x 2 )	1.0~2.0 ( x 2 )	0.2~2.0	1.0~3.0
	Vertical			0.2~1.5	1.0~2.5
Power source	LED				
	life span (x3)	80,000hrs ( 3 )		100,000hrs (advanced energy-saving mode)	
				80,000hrs (other mode)	
Life span of key parts	DLP chip	100, 000hrs ( MTBF 650, 000hrs )			
	Cooling fan	100, 000hrs			
Control signal input		RS~232C; Dsub9; LAN:RJ45 ( 10BASE-T/100BASE-TX ) ; Dsub9 x 2 ( IN/OUT ) ;Original control link;Remote drive by wire;F3.5 jack;IR receiver			
Input signal		DVI-D、BNC、HD D-sub15pins、HD-SDI			
Power consumption	Bright mode	220		258	
	Normal mode	160		174	
	Eco mode	117		124	
	Advanced Eco mode	-		96	
AC Input voltage		AC 100~240V $\pm 10\%$ ,50/60Hz $\pm 1$ Hz			
Operating current (100/240V)		3.4/1.5Amp		3.7/1.6Amp	
Operating environment	Temperature	10~35C.Degree ( 50~95F.Degree )	10~30C.Degree ( 50~86F.Degree )	10~35C.Degree ( 50~95F.Degree )	10~30C.Degree ( 50~86F.Degree )
	Humidity	20~80% without condensation			
Weight		71Kg/156lbs	78Kg/172lbs	107Kg/236lbs	112Kg/247lbs



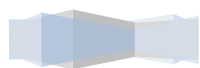
### 1.1.3 Typical Case



**Conference Center**



**Airport Control Center**



### 1.1.4 Contact Us

Address: Genture Electronics, No. 8 Yuanhua Rd,

Science Park in Nanjing University

210046, Nanjing, China

Web: [en.genture.com](http://en.genture.com)

E-mail: [info@genture.com](mailto:info@genture.com)

Tel: +86-25-8778227 0

Fax: +86-25-52897985

Genture Electronics

